

# CALL FOR PAPERS

## IMPLAST 2010

### A Symposium on Plasticity and Impact (including Blast) Mechanics

IMPLAST 2010 is the tenth Symposium in a series of meetings on large deformations. The aim is to provide a forum for scientists, engineers and designers in the universities, scientific laboratories and industry to share their research findings in fundamental and applied aspects of the mechanics of large deformations of metallic, composite and cellular materials and structures at low, medium and high deformation rates.

#### Focus Areas

---

Blast Loading of Structures  
Penetration and Perforation  
Theories of Plasticity  
Earthquake Loading  
Stress Waves and Stress Mitigation in Solids  
Constitutive Relations  
Applications of the Theory to Structural Problems  
Structural Crashworthiness and Failure

#### Important Dates

---

March 22, 2010	Abstracts Due
April 22, 2010	Authors notified, via email, of acceptance
July 22, 2010	Proceedings Papers or Extended Abstracts Due
September 27, 2010	Hotel Reservation Deadline
October 12-14, 2010	IMPLAST 2010 Conference

#### Workshop on Blast Mitigation

---

A workshop consisting of research paper presentations and group discussions will be organized to present the state of art in the field of blast mitigation and to identify areas of research, as of yet unexplored, and in recognizing hurdles that hinder progress in the field.

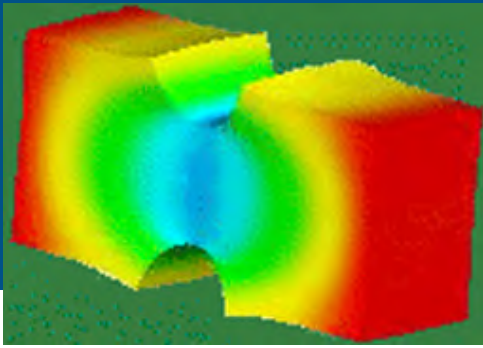
## SUBMIT YOUR ABSTRACT NOW: <http://sem.org>

### Abstracts are due March 22, 2010

SEM will only accept electronic submissions for IMPLAST 2010. Details about submitting abstracts and the electronic submission form are on the SEM Web site: [sem.org](http://sem.org). All abstracts will be received electronically. No copies are required for electronic submission. Do not fax. Do not send duplicate submissions. Accepted papers will also be received electronically, per guidelines on the SEM Web site, and only a CD-ROM Proceedings will be available for IMPLAST 2010.

Please submit a short abstract of the paper (not more than 200 words) electronically by March 22, 2010. Do not include photos or equations in your abstract. Please Note: Once you have successfully submitted your abstract, a confirmation message will appear on the screen. This is the only confirmation that you will receive. If you have questions or concerns about abstract submittal, please contact SEM at 203-790-6373 or [shari@sem1.com](mailto:shari@sem1.com).

Authors will be notified, via email, whether the abstract has been accepted or not by April 22, 2010. Accepted authors will be required to submit the Proceedings paper, or extended abstract, electronically by July 22, 2010. NOTE: If you have not received notification regarding your abstract by April 26, 2010 please contact Kathy Ramsay or Shari Matthews at 203-790-6373, or [shari@sem1.com](mailto:shari@sem1.com).



# IMPLAST 2010

**IMPLAST 2010 is organized by the Society for Experimental Mechanics, Inc., and is sponsored by The Office of Naval Research, and the DHS-URI Center of Excellence for Explosives Detection, Mitigation and Response**

## Organizing Committee

Prof. Arun Shukla, University of Rhode Island, USA  
Prof. Narinder Kumar Gupta, IIT Delhi, INDIA  
Dr. Albert Meyers, Ruhr-University Bochum,  
GERMANY  
Prof. Carl-Ernst Rousseau, University of Rhode  
Island, USA

The 2010 SEM Fall Conference, IMPLAST 2010, is being held at the Renaissance Providence Hotel in Providence, Rhode Island. Hotel rooms have been reserved at a special SEM rate: \$179 plus tax Single/Double. Children 18 and under stay free when sharing a room with an adult using existing bedding. The charge for a rollaway bed is \$10.00 per night.

## Renaissance Providence Hotel

5 Avenue of the Arts  
Providence, RI 02903  
Direct Phone 401-919-5000  
FAX 401-276-0023  
Toll Free (US) 800-468-3571  
[www.renaissanceprovidence.com](http://www.renaissanceprovidence.com)

Reservation Deadline is September 27, 2010

Centrally positioned in the Capitol District, the Renaissance Providence Hotel is conveniently located near the city's top attractions. On-site, there is a 24-hour fitness center, and SEM conference attendees will have free internet available in their guest rooms. Temple Downtown is the restaurant on-site. This upscale American bistro is open for breakfast, lunch and dinner. Also, located close to the Renaissance, is the Cheesecake Factory; Hemenway's, Rhode Island's premier seafood restaurant; Ruth Chris Steakhouse; Capital Grille, and many more dining opportunities. Downtown Providence offers many attractions, restaurants and shopping opportunities for visitors. AS220 Downtown Arts Center is a non-profit arts venue complete with a sandwich cafe. Providence Piers is a terrific place to sightsee. Roger Williams Park is close and it houses not only the Zoo but the Museum of Natural History and Planetarium as well. The Roger Williams Park Zoo is the third oldest Zoo in the nation and is one of Rhode Island's top tourist attractions.



Society for Experimental Mechanics, Inc.  
7 School Street, Bethel, CT 06801 USA • 203-790-6373 • Fax 203-790-4472  
[sem@sem1.com](mailto:sem@sem1.com) • <http://sem.org>